

NATURE PRODUCT SPECIFICATION

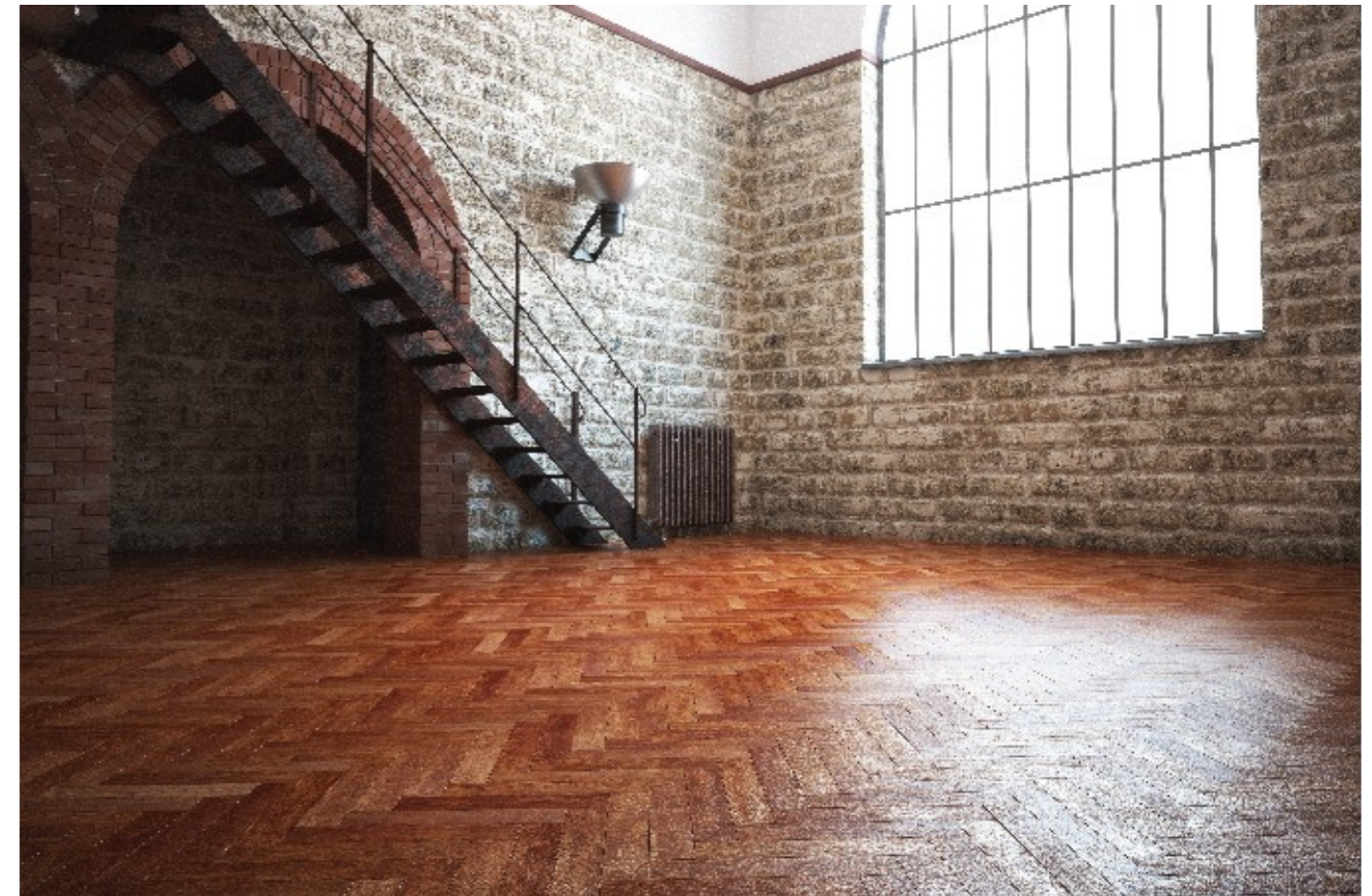
GLAZED FLOOR TILE 15x60cm / 6"x24"

Pressed Ceramic Tiles International Norms ISO 13006-10545/98

GROUP: B1b

NATURE

| No. | Icon | Test item | Unit | Requirements of Standard | | Test result | Result |
|-----|------|-------------------------------|------|--|-------|--------------|----------------------|
| | | | | | | | |
| 1 | | Dimensional variation | (%) | length of side | 0.6 | < 0.6 | Qualified |
| 2 | | Side straightness | (%) | ± 0.5 | | < 0.5 | Qualified |
| 3 | | Squareness | (%) | ± 0.5 | | < 0.5 | Qualified |
| 4 | | Surface flatness | (%) | Center curvature degree | ± 0.5 | < 0.5 | Qualified |
| | | | | Warping degree | ± 0.5 | < 0.5 | Qualified |
| | | | | Side curvature degree | ± 0.5 | < 0.5 | Qualified |
| 5 | | Surface quality | — | Sighting vertically at a distance of 0.8 meter away from the tile no defect on surface is observed in at least 95% of the tile | | conformed | Qualified |
| 6 | | Water absorption | (%) | Average value ≤ 3 individual ≤ 3.3 | | < 3 < 3 | Qualified |
| 7 | | Breaking strength | N | When thickness ≥ 7.5mm the Average value ≥ 700 | | >700 | Qualified |
| 8 | | Rupture modulus | Mpa | Average value ≥ 30 individual ≥ 27 | | > 30 > 30 | Qualified |
| 9 | | Abrasion resistance | revs | > 1500 | | > 1700 | Qualified Class 3 |
| 10 | | Scratch resistance | MOH | — | | > 6 | Qualified |
| 11 | | Frost resistance | — | No cracking after test | | conformed | Qualified |
| 12 | | Resistance to acids & alkalis | — | not less than grade GB | | Grade GA | Qualified |
| 13 | | Chemical resistance | — | not less than grade GB | | Grade GA | Qualified |
| 14 | | Slip resistance | R | Ramp slip rating test | | R11 | Exterior |
| | | | DCoF | DCoF: 0.42 | | >0.42 | Matt/Exterior |



Italian ink-jet design Gres Porcelain floor and wall tiles

KREM

NATURE



Ash

Beige

Bronze

NATURE is available in 15x60cm planks

Packaging:

| | | | | | |
|--------------------|---------------|---------------------------|------------------|------------------------------------|-----------------------------|
| 150 x 600mm x 10mm | 16pcs. / ctn. | 1.44m ² / ctn. | 31kg / ctn. | 1,1 x 1,1m pallet: 40ctn. / pallet | 57.6m ² / pallet |
| 6" x 24" x 0.39" | 16pcs. / ctn. | 15.5 sqft / ctn. | 68.34 lbs / ctn. | 3' 6" pallet: 40ctn. / pallet | 620 sqft / pallet |

Light Grey



KREM