

METROPOLE PRODUCT SPECIFICATION

GLAZED FLOOR TILE 60x60cm, 30x60cm, 30x30cm, 60x120cm
 Pressed Ceramic Tiles International Norms ISO 13006-10545/98
 GROUP: B1b

No.	Icon	Test item	Unit	Requirements of Standard	Test result	Result	
1		Dimensional variation	(%)	length of side	0.6	< 0.6	Qualified
2		Side straightness	(%)		± 0.5	< 0.5	Qualified
3		Squareness	(%)		± 0.5	< 0.5	Qualified
4		Surface flatness	(%)	Center curvature degree	± 0.5	< 0.5	Qualified
				Warping degree	± 0.5	< 0.5	Qualified
				Side curvature degree	± 0.5	< 0.5	Qualified
5		Surface quality	—	Sighting vertically at a distance of 0.8 meter away from the tile no defect on surface is observed in at least 95% of the tile	conformed	Qualified	
6		Water absorption	(%)	Average value ≤ 3 individual ≤ 3.3	< 3 < 3.3	Qualified	
7		Breaking strength	N	When thickness ≥ 7.5mm the Average value ≥ 700	>700	Qualified	
8		Rupture modulus	Mpa	Average value ≥ 30 individual ≥ 27	> 30 > 30	Qualified	
9		Abrasion resistance	revs	> 1500	> 1700	Qualified Class 4	
10		Scratch resistance	MOH	—	> 6	Qualified	
11		Frost resistance	—	No cracking after test	conformed	Qualified	
12		Resistance to acids & alkalis	—	not less than grade GB	Grade GA	Qualified	
13		Chemical resistance	—	not less than grade GB	Grade GA	Qualified	
14		Slip resistance	R DCoF	Ramp slip rating test Matt External DCoF: 0.42	R11 >0.42	Qualified	

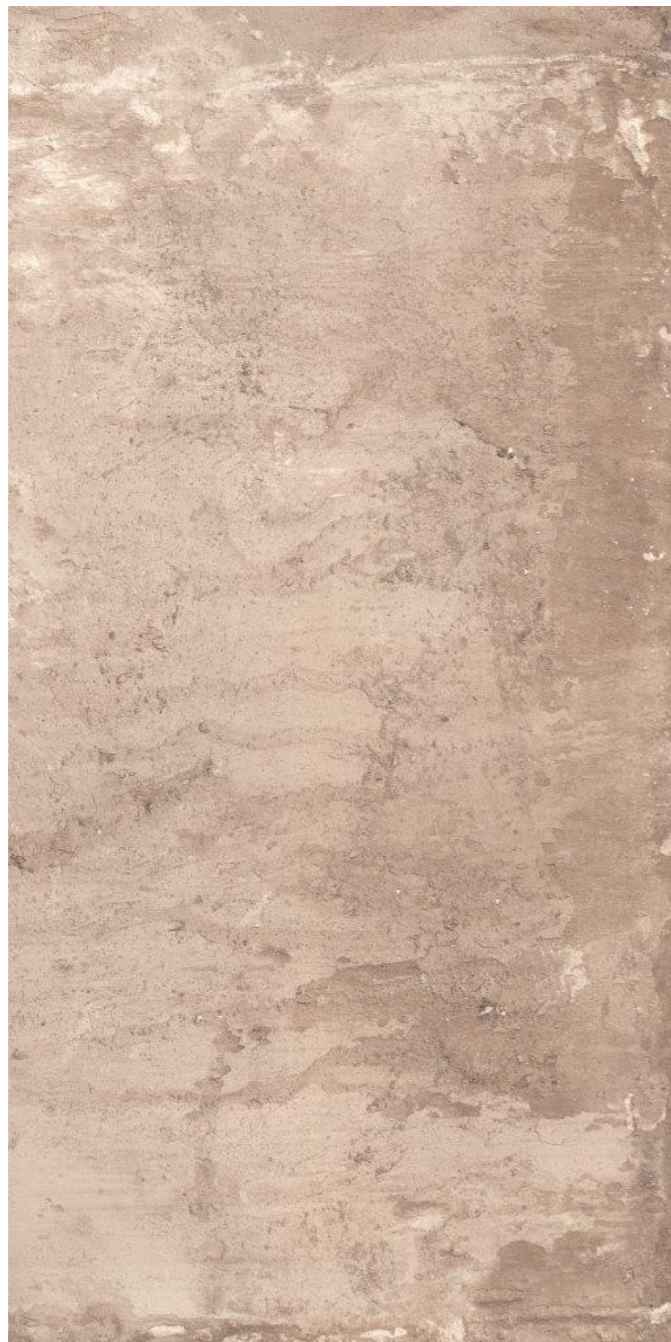
METROPOLE



Italian ink-jet design Gres Porcelain floor & wall tiles

KREM

METROPOLE



Ivory

METROPOLE is available in 60x60cm / 24x24" and 60x120cm / 24x48" in Matt, Lapatto & Polished Finishes.

Packaging:					
600 x 600mm x 10mm	4pcs. / ctn.	1.44m ² / ctn.	30kg / ctn.	1,1 x 1,1m pallet: 40ctn. / pallet	57.6m ² / pallet
24 x 24" x 0.39"	4pcs. / ctn.	15.5 sqft / ctn.	66.14 lbs / ctn.	3' 6" pallet: 40ctn. / pallet	620 sqft / pallet

