

# TITAN PRODUCT SPECIFICATION

GLAZED FLOOR TILE 60x60cm, 30x60cm, 30x30cm, 60x120cm  
 Pressed Ceramic Tiles International Norms ISO 13006-10545/98  
 GROUP: B1a

# TITAN

No.	Icon	Test item	Unit	Requirements of Standard		Speci- fication	Requirement
1		Dimensional variation	(%)	length of side	±0.5	< 0.5	Qualified
2		Side straightness	(%)	± 0.5		< 0.5	Qualified
3		Squareness	(%)	± 0.6		< 0.5	Qualified
4		Surface flatness	(%)	Center curvature degree	± 0.5	< 0.5	Qualified
				Warping degree	± 0.5	< 0.3	Qualified
				Side curvature degree	± 0.5	< 0.3	Qualified
5		Surface quality	—	Sighting vertically at a distance of 0.8 meter away from the tile no defect on surface is observed in at least 95% of the tile		conformed	Qualified
6		Water absorption	(%)	Average value ≤ 0.5 individual ≤ 0.6		< 0.5 < 0.6	Qualified
7		Breaking strength	N	When thickness ≥ 7.5mm the Average value ≥ 1300		> 1300	Qualified
8		Rupture modulus	Mpa	Average value ≥ 35 individual ≥ 32		> 35 > 32	Qualified
9		Abrasion resistance	revs	1700		> 1700	Qualified Class 4
10		Hardness	MOHS	Mohs Scale		> 6	Qualified
11		Frost resistance	—	No cracking after test		conformed	Qualified
12		Resistance to acids & alkalis	—	not less than grade GB		Grade GA	Qualified
13		Chemical resistance	—	not less than grade GB		Grade GA	Qualified
14		Stain resistance	—	Class 3 or better		Class 3	Qualified
15		Lead & Cadmium release	Pb Ca	<0.01mg/l <0.005mg/l		<0.01mg/l <0.005mg/l	Qualified
16		Slip resistance	R DCoF	Ramp slip rating test DCoF: 0.42		R11 >0.42	Qualified
17		PEI rating	—	n.a.		4	—



Italian ink-jet design Porcelain floor & wall tiles

# KREM

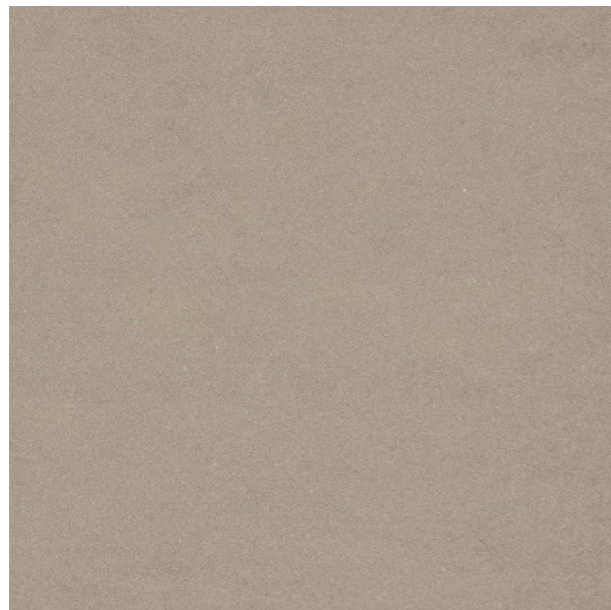
# TITAN



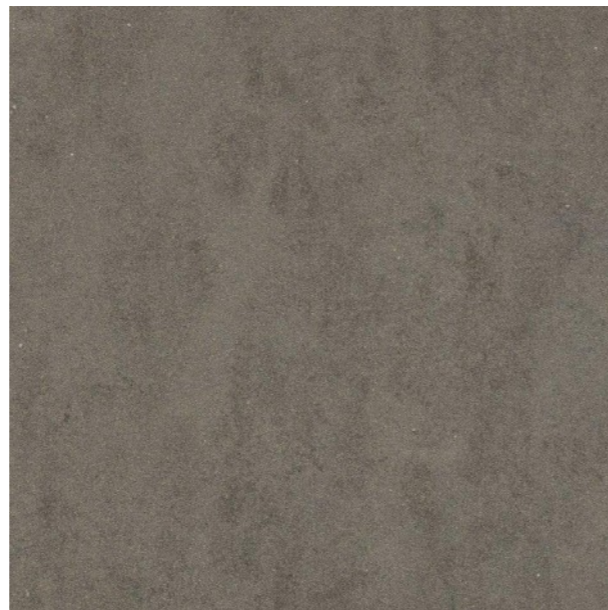
Ivory



Beige



Light Grey



Dark Grey

Taupe

TITAN is available in 60x60cm / 24x24", 60x120cm / 24x48" & 30x30cm / 12x12" in Matt, Lapatto & Polished Finishes.

<b>Packaging:</b>					
600 x 600mm x 10mm	4pcs. / ctn.	1.44m <sup>2</sup> / ctn.	30kg / ctn.	1,1 x 1,1m pallet: 40ctn. / pallet	57.6m <sup>2</sup> / pallet
24 x 24" x 0.39"	4pcs. / ctn.	15.5 sqft / ctn.	66.14 lbs / ctn.	3' 6" pallet: 40ctn. / pallet	620 sqft / pallet

The KREM logo is displayed in a bold, white, sans-serif font against a solid black rectangular background.

